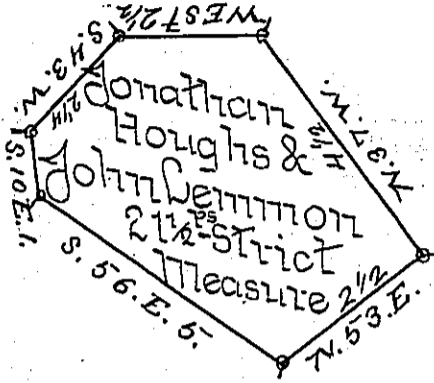


York Shore



Cancaster Shore

A Draught of an Island situate in the River Susquehanna in Donegal Township in the County of Lancaster called "Flag Island" Opposite land of John B Haldeman the town of New Holland on the York side about one hundred perches below the Ark Island and about forty perches Eastward of Forge Island Containing twenty one and one half perches strict Measure, surveyed in Pursuance of a Warrant dated the 26th of September Anno Domini 1816 granted to Jonathan Houghs and John Kemmon. February 12th 1817

By Jacob Hibshman D.S.

To Richard W. Beech Esq^r }
 Surveyor General - }

IN TESTIMONY that the above is a copy of the original remaining on file in the Department of Internal Affairs of Pennsylvania, made conformably to an Act of Assembly approved the 16th day of February, 1833, I have hereunto set my Hand and caused the Seal of said Department to be affixed at Harrisburg, this fourth day of April 1899.

James W. Latta
 Secretary of Internal Affairs.